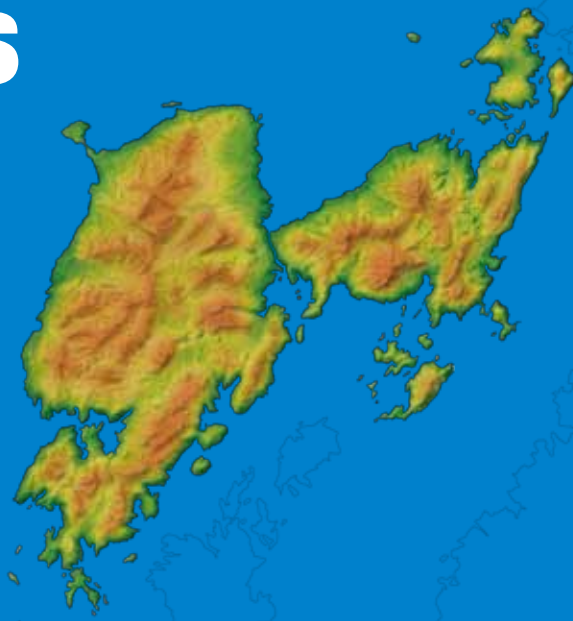


Watch, touch and be impressed!

# An experience of the senses

In the Amakusa Geopark concept promotion conference of 2010, measures were taken to offer a hands-on experience to visitors opening the wonderful expanse of sense experiences that Amakusa has to offer.



## Geo-tour Guides

The creation of an attractive tour program offers an impressive and informative first-hand experience of the wonderful resources that exist in Amakusa. Geo-tour guides are trained to offer scientific explanations of geologic and geographical features, ecology, culture and history of Amakusa. Based on information collected from the Amakusa Goshoura Geopark tour guide program, a proposal was submitted to the Japanese Geopark commission to extend the Geo-tour guide service throughout the Amakusa islands.

### The Goshoura Geo-tour guide

Because Amakusa Goshoura, known as 'dinosaur island' was the origin of a dinosaur fossil dating back about 100 million years, authorization was received from the Japanese Geopark Committee in October, 2009 to allow Goshoura to enter the Japanese Geopark Network. The Goshoura Cretaceous Museum and the Goshoura Tourism Promotion Committee have taken the lead in the promotion of geotourism in the area.



## Conservation and geosites

Areas of precious significance exist throughout the Amakusa islands. While it is the main purpose of the Amakusa Geopark Conference to open these sites to visitors, a keen understanding of the need to protect and preserve each site for future enjoyment is understood. As such, guidelines have been implemented to ensure the safety of these areas.



### Safety notes

Because each geosite exists in a natural place, caution must be taken to ensure personal safety and comfort. Comfortable shoes such as sport or hiking shoes are recommended as is comfortable clothing for active movement. Considering personal safety will ensure a satisfying experience of each geosite.

## Introduction of satellite institutions

Three institutions assigned with the study and education of the nature and environments of Amakusa.

### Goshoura Cretaceous Museum

A scientific museum built around the discovery of a dinosaur fossil in July, 1997. About 1000 fossils including the tooth of the greatest carnivorous dinosaur in Japan are exhibited.



### The Amakusa Visitor Center

An institution which introduces the nature and history of Amakusa through video and displays. Two such presentations concern the exploration of Amakusa's unique tidal flats and the unique occurrence of luminescence known as 'the sea firefly.'



### The Kumamoto Tomioka Visitor Center

A building within the main enclosure of the Tomioka castle offering information about the natural environment of the Unzen-Amakusa National Park, its history and culture.



## "AMAKUSA GEOPARK PLAN" MODEL COURSE

### Model course 1

## Let's explore the dinosaur islands!



### Makishima bicycling course

#### 1. Shiosai-kan

It is the Goshoura harbor which is a vestibule leading into the inside of Goshoura. There, arrangements for bicycle rental can be made. Also, marine products and souvenirs are sold and sightseeing information is given.

#### 2. Nigaki Fossil Park

About 20 solid rocks which include fossils and some skeletal models of dinosaurs are displayed in the open air and one can learn about fossils and other things reading the helpful explanation boards.

#### 3. Banyan trees: 'Ako no sato fureai kan' with rest room

The Banyan trees are grown under windy and salty condition, and serve as a windbreak on the coast line in Makishima. A 300 years old tree is specified as a city natural monument.



#### 4. Nagaura

You can try to scull a traditional boat such as 'Tenmasen' in the calm of Nagaura bay. Pearl culturing can also be seen.

#### 5. Ammonite house

A 60cm diameter ammonite was included in a stratum of about 85 million years ago and is now observable at the Ammonite House. A rare plant and insect species can also be seen in that area.



### Crusing around the dinosaur island

#### 1. Shiosai-kan

It is the Goshoura harbor which is a vestibule leading into the inside of Goshoura. There, arrangements for marine taxi hire can be made. Also, marine products and souvenirs are sold and sightseeing information is given.

#### 2. Bentenjima

A dinosaur footprint fossil was found in Kyushu for the first time in May, 1997 on Bentenjima where the Karakizaki Formation of the Goshoura Group is distributed. The 38cm sized footprint is thought to be of a 5m tall carnivorous dinosaur. The fossil was removed to the Goshoura Cretaceous Museum and its replica was put in its place.

#### 3. Kyodomari

The location where the fossil of a dinosaur was found for the first time in Amakusa is the Kyodomari seashore where the Karakizaki Formation of the Goshoura Group is distributed. In March 1997, a team from Kochi University invited by Goshoura town, discovered a fossil of a part of a dinosaur leg thought to be of a herbivorous dinosaur.

#### 4. Abandoned quarry

If you go around the southern extremity of Nosaba-saki, and continue to the north along the coast, you'll see a quarry where it is possible to clearly observe a collapsed stratum made by a fault.



#### 5. The Cretaceous wall

The highest point is more than 200m and is an excellent visual representation of the Goshoura Group. The characteristic colors of the stratum clearly depict the environmental conditions of the time it was produced. This cliff is the most abundant location of dinosaur fossils in Goshoura islands.

